

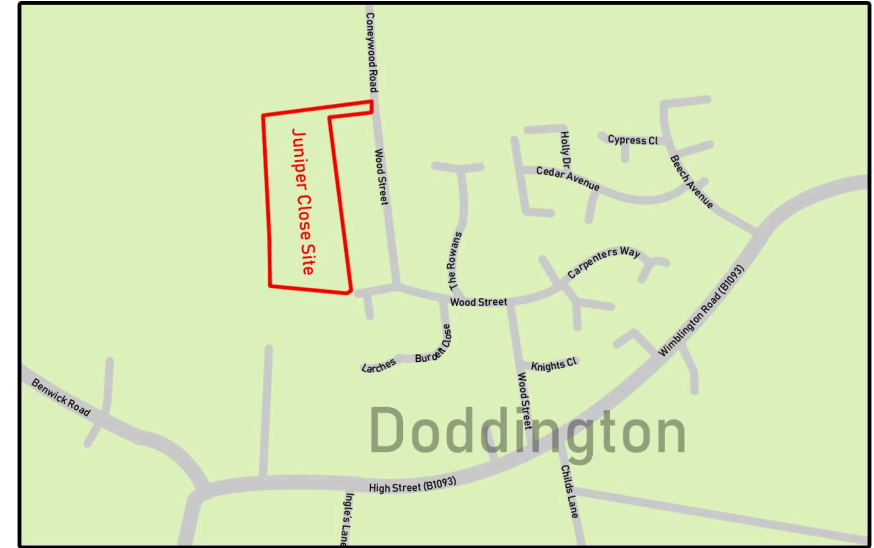
Juniper Close, Doddington, Cambs

This attractive development sits in a peaceful village location of Doddington, not too far from larger towns such as March and Chatteris. The quiet village is served by a good range of local amenities including public house, village store/post office, traditional fish and chip shop, surgery, and walk-in hospital.

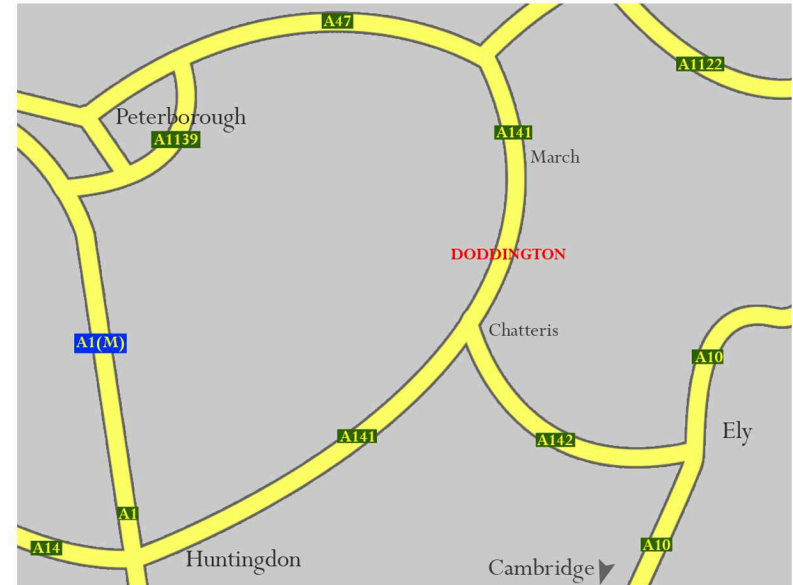
The nearby towns of March and Chatteris offer a wide range of local facilities, March also benefits from its own train station, with regular services to Cambridge, Peterborough, and mainline rail services to London Liverpool Street and Kings Cross.

The city of Ely is approximately twenty minutes away via car and has further excellent amenities; Ely also offers a railway station with direct access to London Kings Cross in 1hr 20 mins. An alternative is the railway station at Huntingdon offering direct links to London Kings Cross via the fast train in just 48 mins.

In addition, commuting to the famous University City of Cambridge takes approximately forty-five minutes by car where there is comprehensive shopping, recreational and cultural facilities.

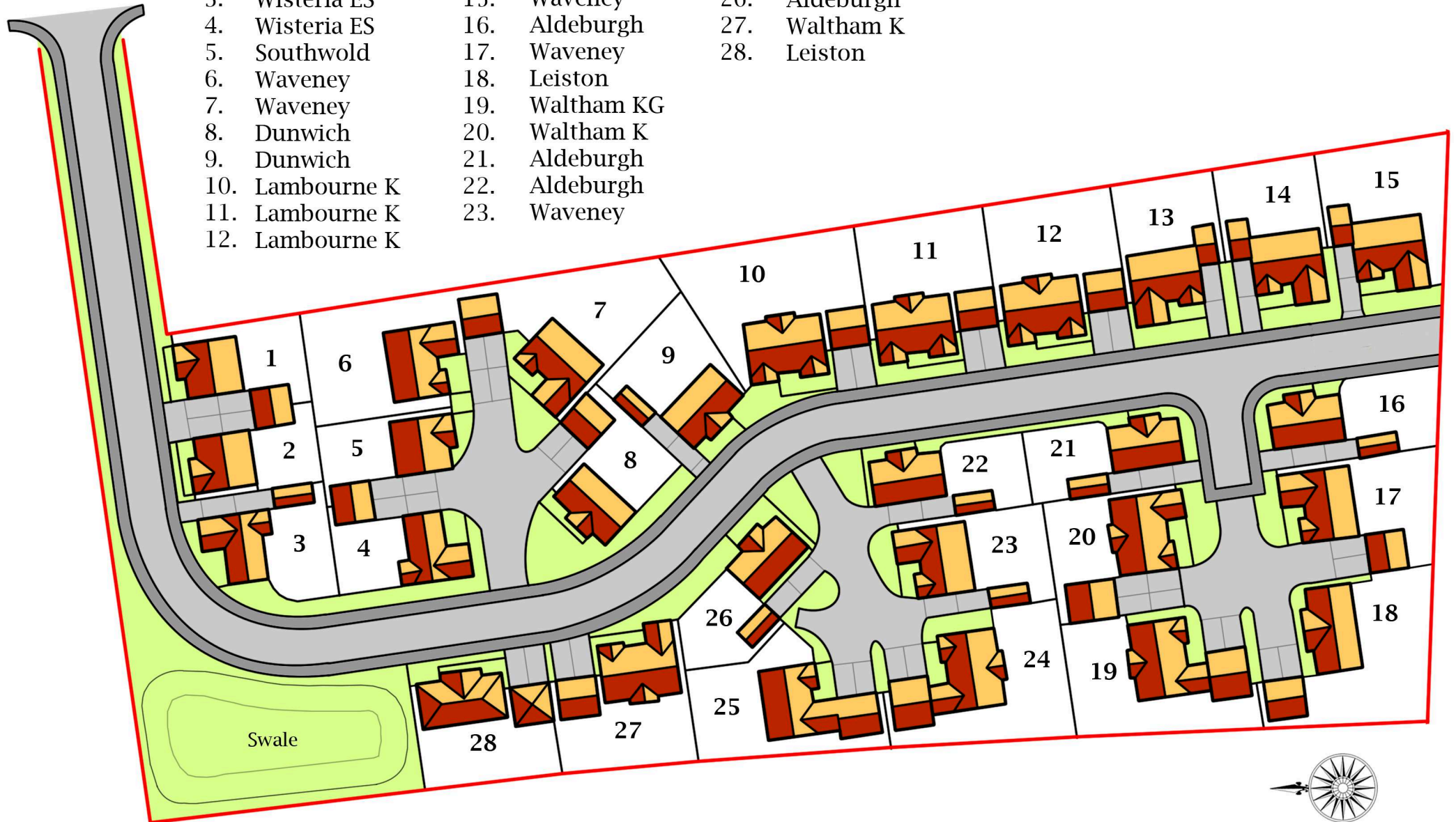


(Far Left) Doddington chapel & clocktower (Left) Jonnie Peacock's gold post box



THE JUNIPERS, DODDINGTON

- | | | |
|-----------------|----------------|----------------|
| 1. Southwold | 13. Waveney | 24. Waltham KG |
| 2. Southwold | 14. Waveney | 25. Waveney G |
| 3. Wisteria ES | 15. Waveney | 26. Aldeburgh |
| 4. Wisteria ES | 16. Aldeburgh | 27. Waltham K |
| 5. Southwold | 17. Waveney | 28. Leiston |
| 6. Waveney | 18. Leiston | |
| 7. Waveney | 19. Waltham KG | |
| 8. Dunwich | 20. Waltham K | |
| 9. Dunwich | 21. Aldeburgh | |
| 10. Lambourne K | 22. Aldeburgh | |
| 11. Lambourne K | 23. Waveney | |
| 12. Lambourne K | | |



THE JUNIPERS, Doddington general specification

Kitchen:

- New England Ivory Ash coloured doors with complimentary carcass, Graphite matt laminate postformed worktops
- 1.5 bowl stainless steel sink with chrome mixer tap
- *Built-in double electric oven
- *Electric ceramic hob
- *Chimney hood
- *Built-in 50/50 fridge/freezer
- Rhinofloor Vinyl Flooring
- Wall tiles to underside of wall units
- Gas supply in hob area

Bathroom:

- White pedestal washbasin with chrome mixer tap
- White close coupled WC suite
- White bath with twin chrome grips and chrome bath filler
- Wall tiles to half-height behind sanitaryware
- Slip resistant vinyl flooring
- * Southwold type only has P-Shape shower bath with glass bath/shower screen and chrome mixer tap and full height tiling to bath area*

Bedroom 1:

- Built-in Wardrobes with White Bi-Fold doors and polished door furniture

Shower Room/En Suite:

- White pedestal hand rinse basin with chrome taps
- White close coupled WC suite
- White shower tray with clear glass door
- Wall tiles to full height in shower cubicle and half height behind sanitaryware
- Shaver light over basin
- Slip resistant vinyl flooring

Entrance Doors:

- GRP Composite with glazed panels to top half and polished chrome door furniture
- Rear door in white with glazed panels and polished chrome door furniture
- Personal garage door in white with glazed panel and polished chrome door furniture
- Garage door in white

Electrical:

- Telephone point
- Multimedia socket plate consisting of Satellite, TV, FM/DAB radio and BT to lounge and Bedroom 1
- External lights to front and rear
- Spur point for alarm in hall
- Power and light to garage
- Under cupboard lighting to kitchen wall units
- Low energy downlights in ceiling to bathroom, shower room/en suite and kitchen

Internal Doors:

- 6 panel white painted with polished chrome door furniture

Miscellaneous:

- Gas fired central heating by radiators
- All internal walls painted Magnolia and all internal and external woodwork painted white gloss
- Guttering all white PVCu
- Fascia, bargeboard and internal windowboards white PVCu
- Outside tap provided
- Patio area provided outside French Doors
- Garden division fence in wooden panels with concrete posts and gravel boards
- White PVCu windows and french doors to be fitted with sealed double glazed units

IMPORTANT NOTICE Although care has been taken in the preparation of these particulars, plans and specification, their accuracy is not guaranteed and they are subject to updating and variation, due to Governing Authorities and availability of materials from Suppliers.

*Subject to Covid 19 & Brexit we are hoping to use AEG appliances

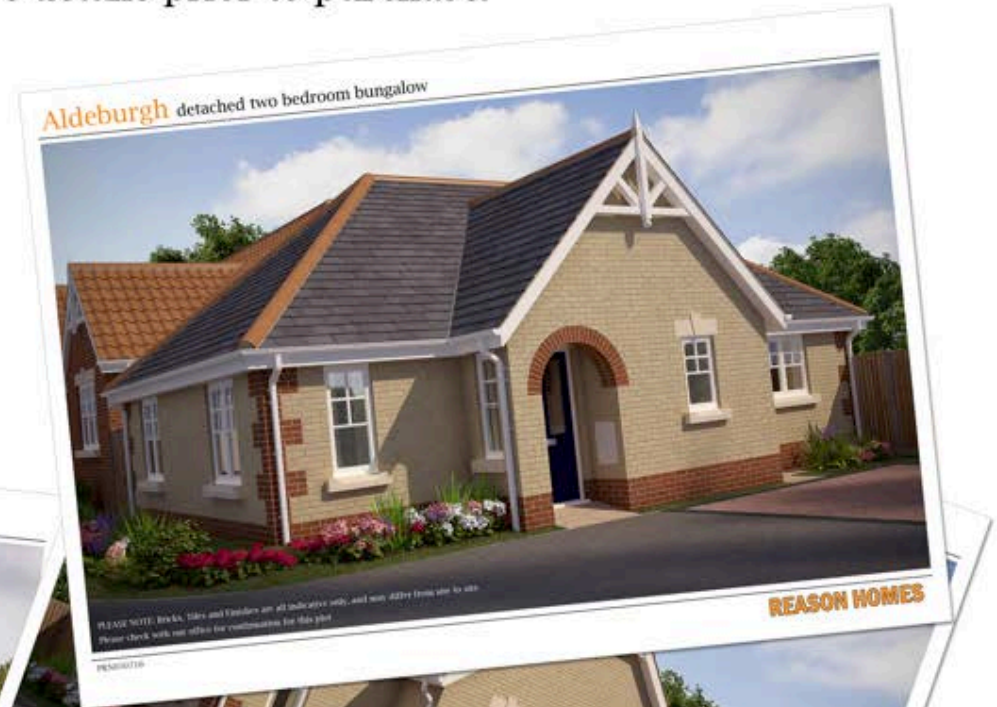
Please Note:

All of the Specifications, layout plans and views shown within this brochure and on the Reason Homes website are all indicative only of the look and layout of the house type. Fixtures, fittings, bricks, windows, tiles and actual plot layout may differ from site to site and plot to plot.

Please ensure that you contact the office and confirm all of these details prior to purchase.

Thank you

E&EO



Aldeburgh detached two bedroom bungalow



PLEASE NOTE: Bricks, Tiles and Finishes are indicative only, and may differ from site to site depending on local factors and stock availability. Please check with our office for confirmation for this plot

Aldeburgh two bedroom bungalow



ALDEBURGH two bedroom bungalow

Lounge	4.816m (15'10")	x	3.290m (10'9")
Kitchen	3.587m* (11'9")	x	2.725m (8'11")
En Suite	1.190m (3'11")	x	2.450m (8'1")
Bedroom 1	3.930m (12'11")	x	3.290m* (10'9")
Bedroom 2	2.769m (9'1")	x	2.725m (8'11")
Bathroom	2.228m (7'4")	x	1.850m (6'1")

* Max dimension (includes depth of wardrobes in master bedroom).

- INT FF = Integrated Fridge Freezer
- WM = Space for Washing Machine
- DW = Space for Dishwasher
- AC = Airing Cupboard
- C = Cupboard
- B = Boiler within kitchen wall cupboard

This layout is indicative only - no dimensions should be scaled from this plan

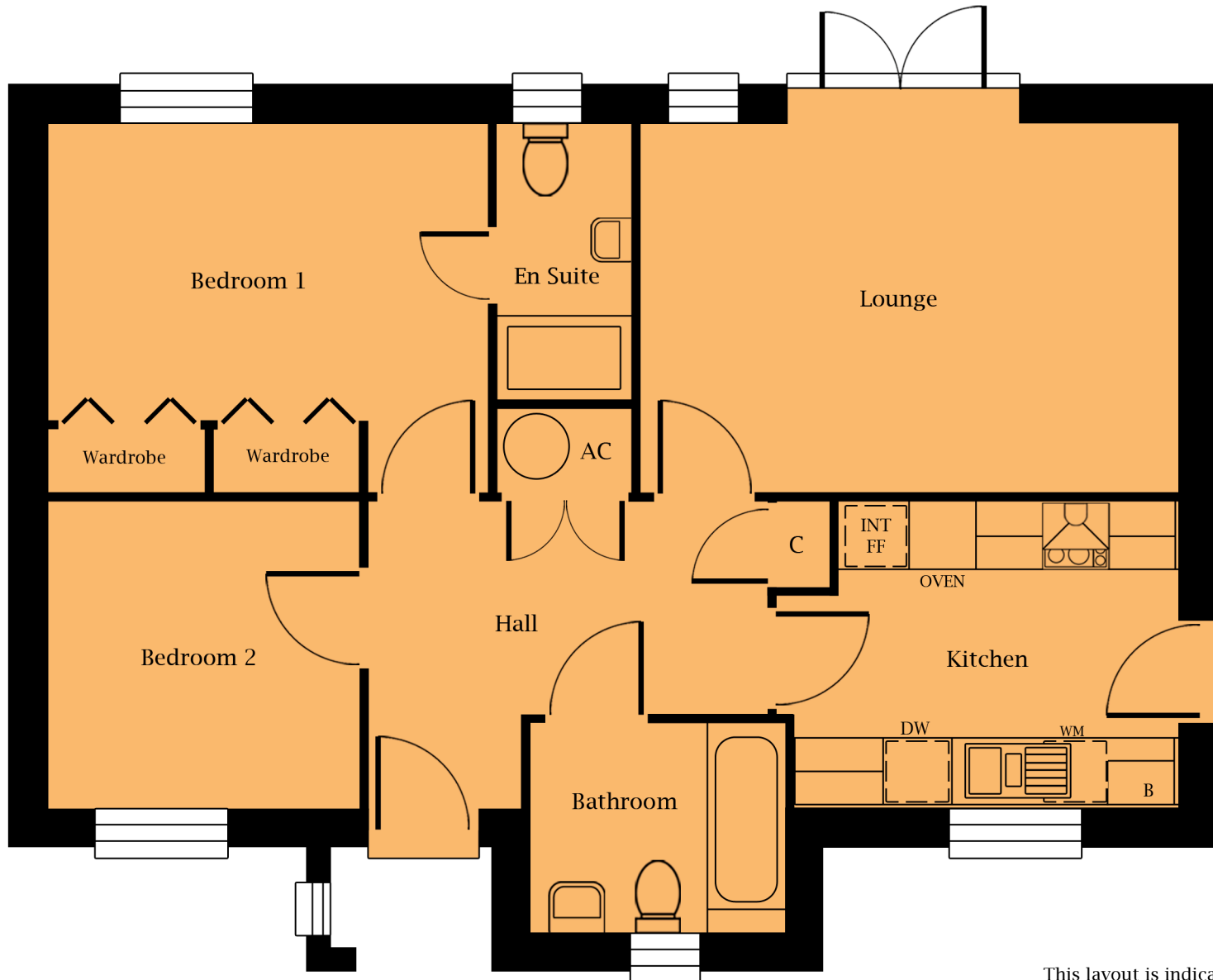
Dunwich two bedroom bungalow



PRN170817

REASON HOMES

Dunwich detached two bedroom bungalow



DUNWICH two bedroom bungalow

Lounge	4.816m (15'10")	x	3.290m (10'9")
Kitchen	3.436m* (11'3")	x	2.725m (8'11")
En Suite	1.170m (3'10")	x	2.450m (8'1")
Bedroom 1	3.930m (12'11")	x	3.290m* (10'9")
Bedroom 2	2.767m (9'1")	x	2.725m (8'11")
Bathroom	2.248m (7'4")	x	1.850m (6'1")

* Max dimension (includes depth of wardrobes in master bedroom).

- INT FF = Integrated Fridge Freezer
- WM = Space for Washing Machine
- DW = Space for Dishwasher
- AC = Airing Cupboard
- C = Cupboard
- B = Boiler within kitchen wall cupboard

This layout is indicative only - no dimensions should be scaled from this plan

Lambourne K three bedroom bungalow



PLEASE NOTE: Bricks, Tiles and Finishes are indicative only, and may differ from site to site depending on local factors and stock availability. Please check with our office for confirmation for this plot

Lambourne K detached three bedroom bungalow



LAMBOURNE K three bedroom bungalow

Lounge	3.650m (12'0")	x	5.000m (16'5")
Kitchen	3.634m (12'0")	x	4.115m (13'6")
En Suite	2.265m* (7'5")	x	1.805m (5'11")
Bedroom 1	3.465m* (11'4")	x	3.440m (11'3")
Bedroom 2	3.380m (11'1")	x	3.605m* (11'10")
Bedroom 3	3.380m (11'1")	x	3.350m (11'0")
Bathroom	2.465m* (8'1")	x	2.146m* (7'0")

* Max dimension (includes depth of wardrobes in master bedroom).

- FF = Fridge/Freezer Space
- DW = Dishwasher Space
- WM = Washing Machine Space
- AC = Airing Cupboard
- C = Cupboard
- B = Boiler within kitchen wall cupboard

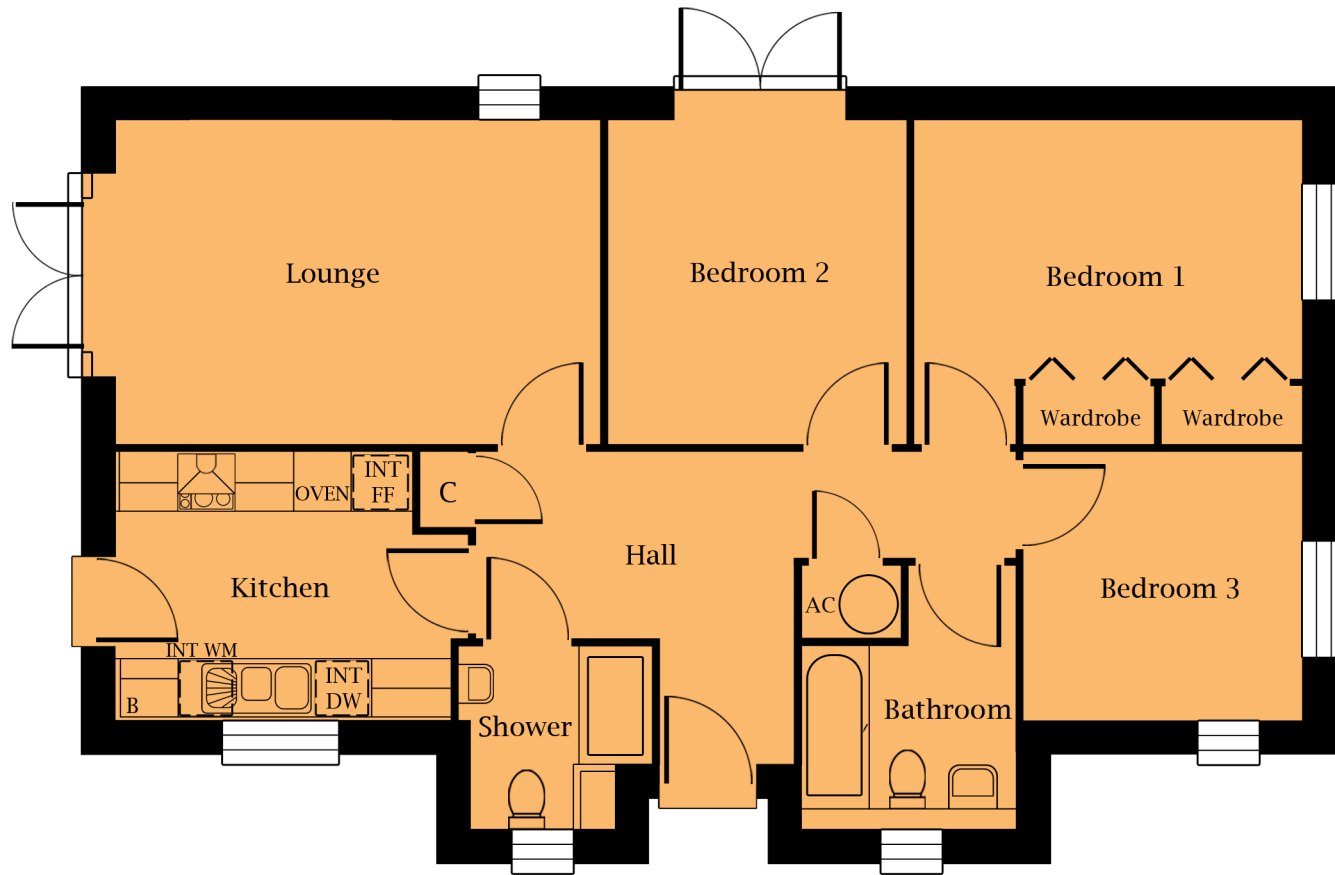
This layout is indicative only - no dimensions should be scaled from this plan

Leiston detached three bedroom bungalow



PLEASE NOTE: Bricks, Tiles and Finishes are indicative only, and may differ from site to site depending on local factors and stock availability. Please check with our office for confirmation for this plot

Leiston three bedroom bungalow



LEISTON three bedroom bungalow

Lounge	4.950m (16'3")	x	3.290m (10'9")
Kitchen	3.425m* (11'3")	x	2.725m* (8'11")
Shower	1.954m* (6'5")	x	1.845m* (6'1")
Bedroom 1	3.950m (13'0")	x	3.290m* (10'9")
Bedroom 2	3.053m (10'0")	x	3.290m (10'9")
Bedroom 3	2.821m (9'3")	x	2.725m (8'11")
Bathroom	2.143m* (7'0")	x	2.675m* (8'9")

* Max dimension (includes depth of wardrobes in master bedroom).

INT FF = Integrated Fridge Freezer space
 INT WM = Integrated Washing Machine space
 INT DW = Integrated Dishwasher space
 AC = Airing Cupboard
 C = Cupboard
 B = Boiler within kitchen wall cupboard

This layout is indicative only - no dimensions should be scaled from this plan

Leiston SG three bedroom bungalow



PRN170817

REASON HOMES

Leiston SG three bedroom bungalow



LEISTON three bedroom bungalow

Lounge	4.950m (16'3")	x	3.290m (10'9")
Kitchen	3.425m* (11'3")	x	2.725m* (8'11")
Shower	1.954m* (6'5")	x	1.845m* (6'1")
Bedroom 1	3.950m (13'0")	x	3.290m* (10'9")
Bedroom 2	3.053m (10'0")	x	3.290m (10'9")
Bedroom 3	2.821m (9'3")	x	2.725m (8'11")
Bathroom	2.143m* (7'0")	x	2.675m* (8'9")

* Max dimension (includes depth of wardrobes in master bedroom).

INT FF = Integrated Fridge Freezer space
 INT WM = Integrated Washing Machine space
 INT DW = Integrated Dishwasher space
 AC = Airing Cupboard
 C = Cupboard
 B = Boiler within kitchen wall cupboard

This layout is indicative only - no dimensions should be scaled from this plan

Southwold two bedroom bungalow



PLEASE NOTE: Bricks, Tiles and Finishes are indicative only, and may differ from site to site depending on local factors and stock availability. Please check with our office for confirmation for this plot

Southwold two bedroom bungalow



SOUTHWOLD two bedroom bungalow

Lounge	3.720m* (12'3")	x	4.950m (16'3")
Kitchen	3.715m (12'2")	x	2.585m (8'6")
Bedroom 1	3.040m* (10'0")	x	3.900m* (12'10")
Bedroom 2	3.120m (10'3")	x	2.715m (8'11")
Bathroom	2.440m* (8'0")	x	2.200m (7'3")

* Max dimension (includes depth of wardrobes in master bedroom).

- INT FF = Integrated Fridge Freezer
- WM = Washing Machine space
- DW = Dishwasher space
- AC = Airing Cupboard
- C = Cupboard
- B = Boiler within kitchen wall cupboard

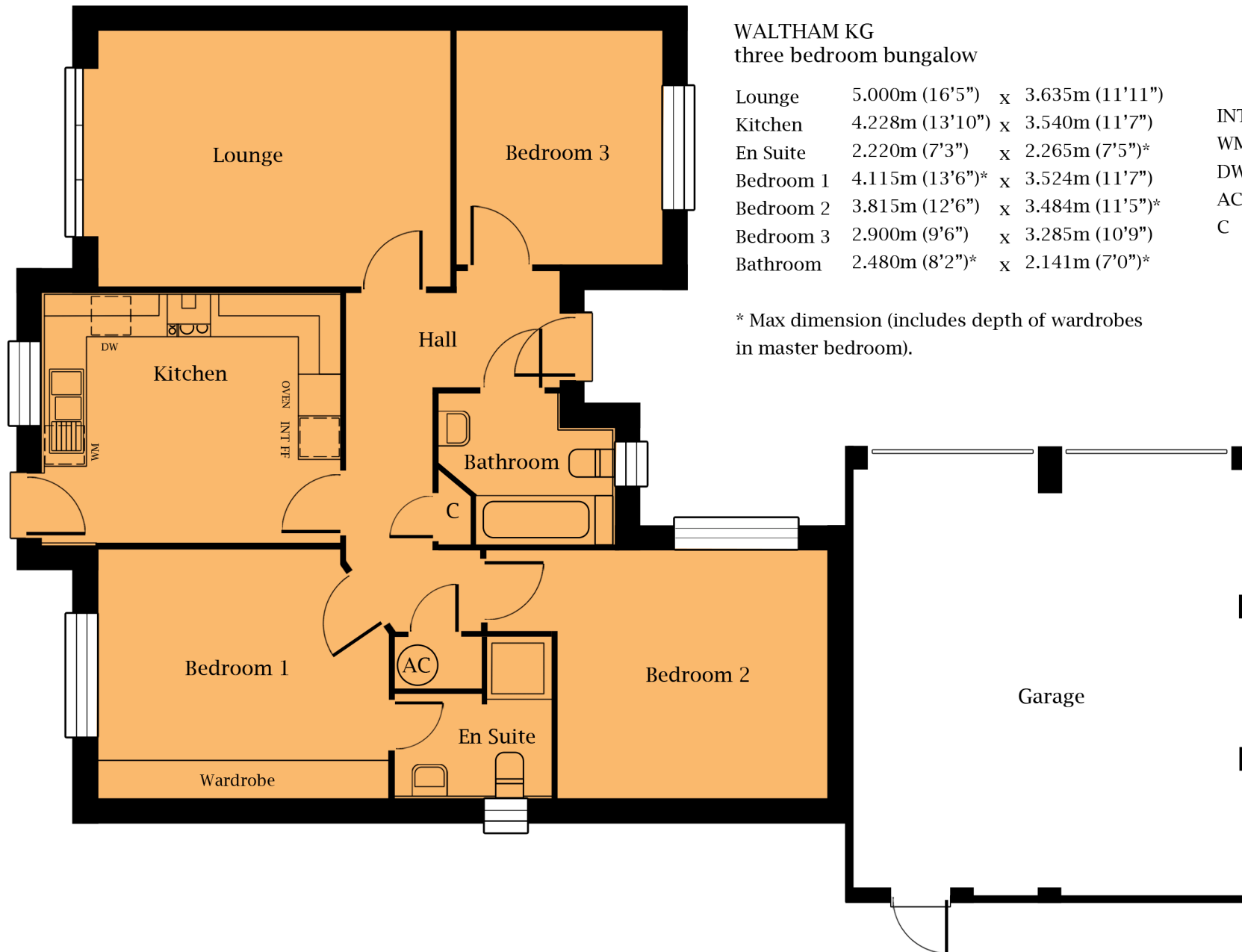
This layout is indicative only - no dimensions should be scaled from this plan

Waltham KG three bedroom bungalow



PLEASE NOTE: Bricks, Tiles and Finishes are indicative only, and may differ from site to site depending on local factors and stock availability. Please check with our office for confirmation for this plot.

Waltham KG three bedroom bungalow



WALTHAM KG three bedroom bungalow

Lounge	5.000m (16'5")	x	3.635m (11'11")
Kitchen	4.228m (13'10")	x	3.540m (11'7")
En Suite	2.220m (7'3")	x	2.265m (7'5")*
Bedroom 1	4.115m (13'6")*	x	3.524m (11'7")
Bedroom 2	3.815m (12'6")	x	3.484m (11'5")*
Bedroom 3	2.900m (9'6")	x	3.285m (10'9")
Bathroom	2.480m (8'2")*	x	2.141m (7'0")*

- INT FF = Integrated Fridge Freezer
- WM = Washing Machine Space
- DW = Dishwasher Space
- AC = Airing Cupboard
- C = Cupboard

* Max dimension (includes depth of wardrobes in master bedroom).

This layout is indicative only -
no dimensions should
be scaled from this plan

Waltham K detached three bedroom bungalow



PLEASE NOTE: Bricks, Tiles and Finishes are indicative only, and may differ from site to site depending on local factors and stock availability. Please check with our office for confirmation for this plot.

Waltham K three bedroom bungalow



This layout is indicative only -
no dimensions should
be scaled from this plan

- FF = Fridge Freezer
- WM = Washing Machine Space
- DW = Dishwasher Space
- AC = Airing Cupboard
- C = Cupboard

WALTHAM K three bedroom bungalow

Lounge	5.000m (16'5")	x	3.635m (11'11")
Kitchen	4.228m (13'10")	x	3.540m (11'7")
En Suite	2.220m (7'3")	x	2.265m (7'5")*
Bedroom 1	4.115m (13'6")*	x	3.524m (11'7")
Bedroom 2	3.815m (12'6")	x	3.484m (11'5")*
Bedroom 3	2.900m (9'6")	x	3.285m (10'9")
Bathroom	2.480m (8'2")*	x	2.141m (7'0")*

* Max dimension (includes depth of wardrobes
in master bedroom).

house type **Waveney** detached three bedroom bungalow



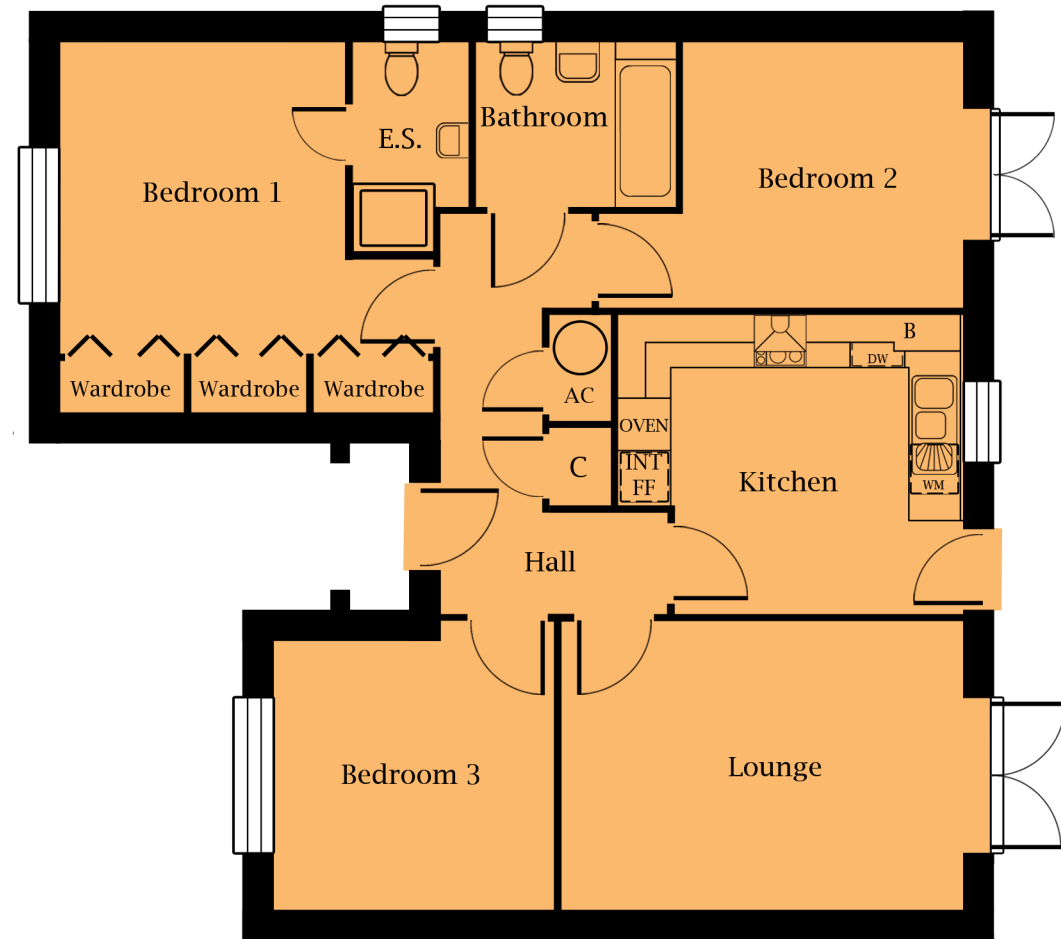
Waveney three bedroom bungalow

- INT FF = Integrated Fridge
Freezer space
WM = Washing Machine space
DW = Dishwasher space
AC = Airing Cupboard
C = Cupboard
B = Boiler within kitchen
wall cupboard

WAVENEY three bedroom bungalow with single garage

Lounge	4.540m (14'11")	x	3.250m (10'8")
Kitchen	3.910m* (12'10")	x	3.388m (11'1")
En Suite	1.290m* (4'3")	x	2.355m* (7'8")
Bedroom 1	4.210m* (13'10")	x	4.160m* (13'8")
Bedroom 2	3.150m (10'4")	x	2.990m (9'10")
Bedroom 3	3.153m (10'4")	x	3.250m (10'8")
Bathroom	2.260m* (7'5")	x	1.835m (6'0")

* Max dimension (includes depth of wardrobes in master bedroom).



This layout is indicative only - no dimensions should be scaled from this plan

Waveney G three bedroom bungalow



PRN170817

REASON HOMES

Waveney G three bedroom bungalow



WAVENEY G three bedroom bungalow with single garage

Lounge	4.540m (14'11")	x	3.250m (10'8")
Kitchen	3.910m* (12'10")	x	3.388m (11'1")
En Suite	1.290m* (4'3")	x	2.355m* (7'8")
Bedroom 1	4.210m* (13'10")	x	4.160m* (13'8")
Bedroom 2	3.150m (10'4")	x	2.990m (9'10")
Bedroom 3	3.153m (10'4")	x	3.250m* (10'8")
Bathroom	2.260m* (7'5")	x	1.835m (6'0")

* Max dimension (includes depth of wardrobes in master bedroom).

- INT FF = Integrated Fridge Freezer space
- WM = Washing Machine space
- DW = Dishwasher space
- AC = Airing Cupboard
- C = Cupboard
- B = Boiler within kitchen wall cupboard

This layout is indicative only - no dimensions should be scaled from this plan

Wisteria ES detached two bedroom bungalow



PLEASE NOTE: Bricks, Tiles and Finishes are indicative only, and may differ from site to site depending on local factors and stock availability. Please check with our office for confirmation for this plot

Wisteria ES two bedroom bungalow



This layout is indicative only - no dimensions should be scaled from this plan

WISTERIA ES two bedroom bungalow

Lounge	3.176m (10'5")	x	5.220m (17'2")
Kitchen	3.378m (11'1")	x	3.110m (10'2")
Shower	2.275m* (7'6")	x	1.265m (4'2")
Bedroom 1	4.165m* (13'8")	x	3.155m (10'4")
Bedroom 2	2.985m (9'9")	x	3.155m (10'4")
Bathroom	1.850m (6'1")	x	2.260m* (7'5")

* Max dimension (includes depth of wardrobes in master bedroom).

- FF = Space for Fridge Freezer space
- WM = Space for Washing Machine space
- DW = Space for Dishwasher space
- AC = Airing Cupboard
- B = Boiler within kitchen wall cupboard